

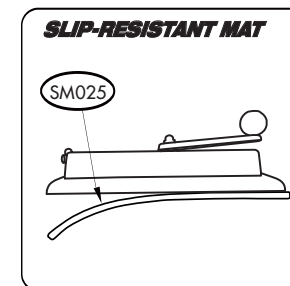
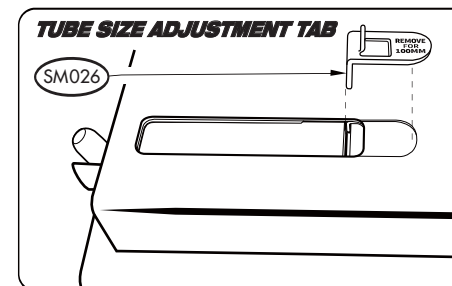
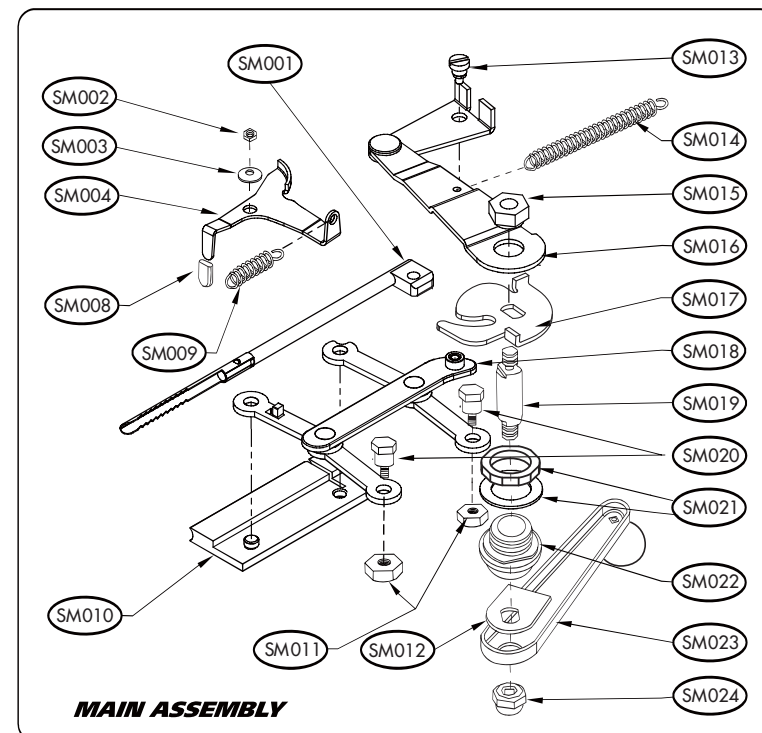


PARTS PRICE LIST

Order Form

PREMIER® SUPERMATIC® PARTS LIST				
Qty	Part Description	Part No.	Price	Amount
	injector	SM001	US\$ 3.00	
	insert nut	SM002	US\$.30	
	small washer	SM003	US\$.20	
	tube clamp release	SM004	US\$ 1.00	
	rubber cover	SM008	US\$.20	
	short spring	SM009	US\$.40	
	tamper	SM010	US\$ 8.20	
	brass nut (2)	SM011	US\$.30	
	stud lock	SM012	US\$.40	
	flathead screw	SM013	US\$.35	
	long spring	SM014	US\$.60	
	1/4" nut	SM015	US\$.60	
	injector lever assembly	SM016	US\$ 3.00	
	cam	SM017	US\$ 1.80	
	link assembly	SM018	US\$ 2.40	
	stud	SM019	US\$ 2.50	
	hex screw (2)	SM020	US\$.40	
	lock nut and large washer	SM021	US\$.60	
	shaft bushing	SM022	US\$.95	
	crank handle assembly	SM023	US\$ 2.40	
	acorn cap nut	SM024	US\$.60	
	slip-resistant mat	SM025	US\$ 3.50	
	tube size adjustment tab	SM026	US\$ 1.00	
subtotal				

Parts



Replacement parts for the Supermatic® may become unavailable if Republic Tobacco chooses, in its sole discretion, to discontinue its inventory of such parts. Republic Tobacco is under no obligation to keep and maintain an inventory of replacement parts available for the Supermatic®. Product must be registered for repair and service agreement to be valid.

See Reverse Side for Payment Details



**YOU
MUST INCLUDE
PROOF OF AGE
(COPY OF VALID DRIVER'S
LICENSE/LEGAL ID)
WITH THIS
FORM!**

month / day / year

See Reverse Side for Parts List