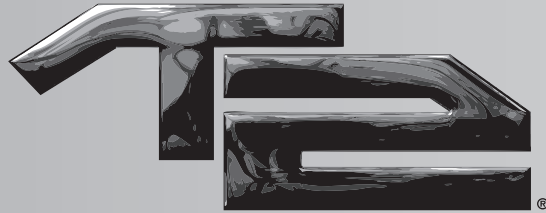


**YOU
MUST INCLUDE
PROOF OF AGE**
(COPY OF VALID DRIVER'S
LICENSE/LEGAL ID)
**WITH THIS
FORM!**

SEE REVERSE
SIDE FOR
PARTS LIST

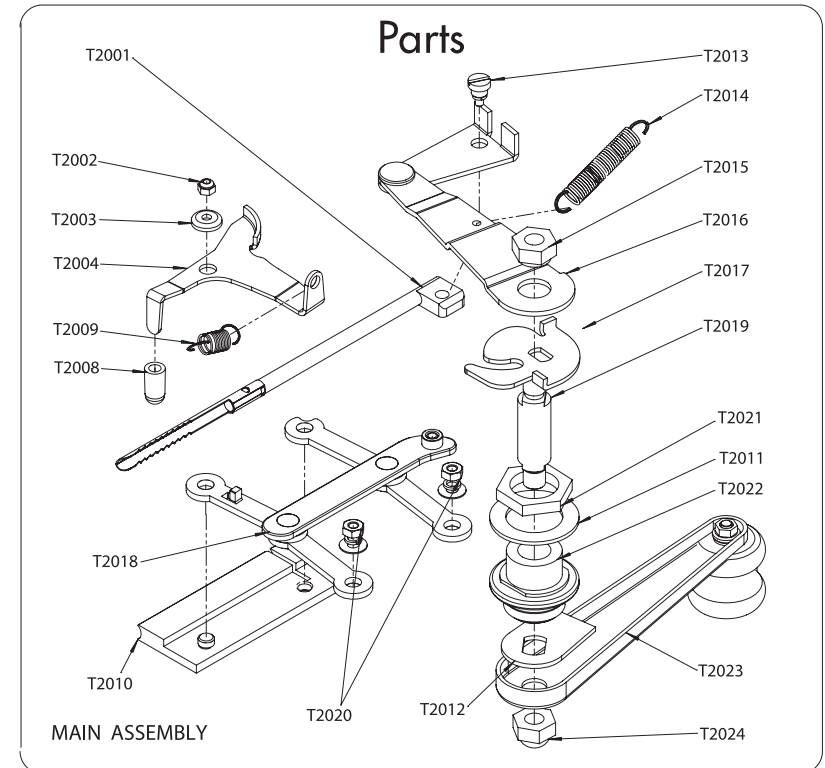
TOP-O-MATIC®



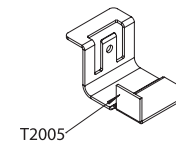
PRICE LIST FOR PARTS - ORDER FORM

TOP-O-MATIC® T2® PARTS LIST

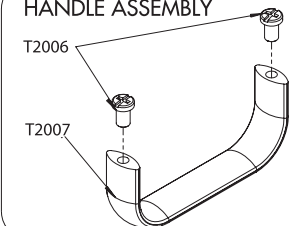
Qty	Part Description	Part No.	Price	Amount
	injector	T2001	US\$ 3.00	
	insert nut	T2002	US\$.30	
	small washer	T2003	US\$.20	
	tube clamp release	T2004	US\$ 1.00	
	adjustment plate	T2005	US\$ 1.80	
	1/8" screw (2)	T2006	US\$.20	
	grip handle	T2007	US\$ 2.50	
	rubber cover	T2008	US\$.20	
	short spring	T2009	US\$.40	
	tamper	T2010	US\$ 8.20	
	large washer	T2011	US\$.30	
	stud lock	T2012	US\$.40	
	flathead screw	T2013	US\$.35	
	long spring	T2014	US\$.60	
	1/4" nut	T2015	US\$.60	
	injector lever assembly	T2016	US\$ 3.00	
	cam	T2017	US\$ 1.80	
	link assembly	T2018	US\$ 2.40	
	stud	T2019	US\$ 2.50	
	screw & washer set (2)	T2020	US\$.40	
	lock nut	T2021	US\$.60	
	shaft bushing	T2022	US\$.95	
	crank handle assembly	T2023	US\$ 2.40	
	acorn cap nut	T2024	US\$.60	
	slip-resistant mat <small>(not pictured)</small>	T2025	US\$ 3.50	
subtotal				



ADJUSTMENT PLATE



HANDLE ASSEMBLY



Replacement parts for the T2 may become unavailable if Republic Tobacco chooses, at its sole discretion, to discontinue its inventory of such parts. Republic Tobacco is under no obligation to keep and maintain an inventory of replacement parts available for the T2. Product must be registered for repair and service agreement to be valid.

SEE REVERSE
SIDE FOR
PAYMENT DETAILS